



*Abundant Blessings!*



## 2017 Annual Report

Men's Shelter ♥ Agape Family Shelter ♥ Lebanon Free Clinic ♥ Agape Christmas



Susan A. Blouch  
Executive Director

### Board of Directors

Lebanon Rescue Mission belongs to God and the staff is committed to Him. The Mission is governed by a godly and compassionate Board of Directors who understand their responsibility to assure your contributions are used honorably.

**Brett Holland** — *President*  
CFP® Financial Advisor, Stifel Nicolaus

**Rev. Dr. Roger Bucy** — *Vice President*  
Chaplain, Retired

**Jean Hassinger** — *Secretary*  
Speech Pathologist, Retired

**Yvonne Myers** — *Treasurer*  
Administrative, Organic Unlimited, Inc.

**Steve Allwein** — *Member*  
President, Business Owner,  
Allwein's Carpet One

**James A. Biever** — *Member*  
Pennsylvania State Patrol, Retired,  
State Trooper

**Judge Robert Eby** — *Member*  
Senior Judge, Retired

**Betty Eiceman** — *Member*  
Public Service, Former City  
Mayor (first female), Retired

**Roger Grimes** — *Member*  
Organic Unlimited PA Certified  
Organic Feed Mill, Owner

**Rev. Thomas Keller** — *Member*  
Calvary Chapel of Lebanon,  
Senior Pastor

**Kevin Kleinfelter** — *Member*  
Prudential, ChFC Financial Advisor

**Frederick Long, Esq.** — *Member*  
Long Brightbill Attorneys at Law,  
Attorney

**Wiley Parker, Esq.** — *Member*  
Henry & Beaver, LLC, Attorney –  
Civil litigation

# God is so very Good!

Dear Friend,

God is working in spectacular ways to care for people here. Men and women, boys and girls come here and experience Jesus in ways that stay with them forever.

I am so blessed to see God's work in other's lives. And, I am very thankful for you.

Because of your generosity, the Lebanon Rescue Mission is now debt free!

The new building we opened just three and a half years ago is completely paid off. That is a remarkable accomplishment by our donor family who believes in caring for others through the Lebanon Rescue Mission.

Your magnificent generosity has made us free to follow God's lead into new and greater fields of service. We are strong because of supportive friends and strong in leadership on our board. Plus, there is a wonderful sense of community among our staff, volunteers and guests staying here.

This is all so very exciting. I sense God has much more for us to do that will bear lasting spiritual fruit in people's lives.

In the following pages, you will see how God blessed our community through the Lebanon Rescue Mission. For example, over 660 seniors were touched by overwhelming generosity from our volunteers and friends through our Agape Christmas.

Through the year, we served 25,419 meals and provided 13,963 nights of shelter. Praise God!

You funded this work and God blessed us. Thank you.

In HIS Service,

Susan A. Blouch  
Executive Director  
Lebanon Rescue Mission



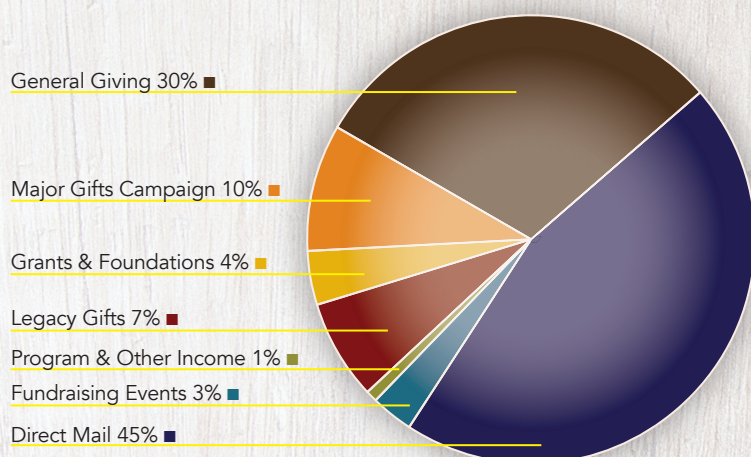
*Thank you, from all of us at Lebanon Rescue Mission,  
for being part of this amazing work!*

# Financial Report

Thank you for your investments in people, our community and in Heaven!

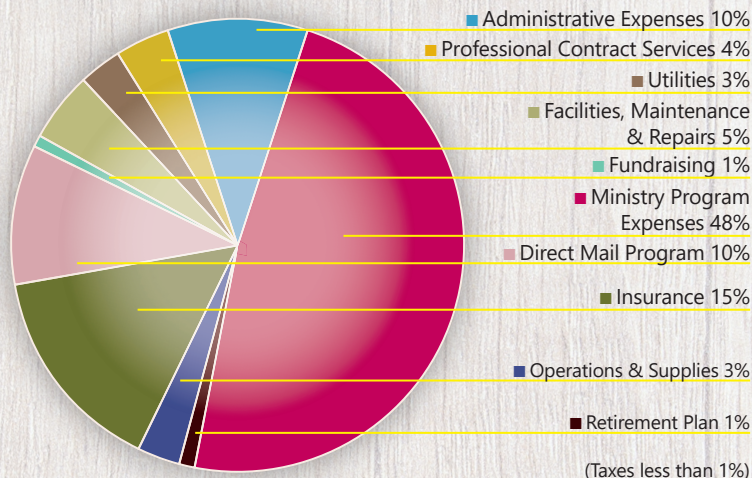
## 2017 Income

\$1,296,206



## 2017 Expenses

\$1,268,204



## Lebanon Rescue Mission Community Impact

Your support of the Lebanon Rescue Mission means our community saves a huge amount of money. Take a look at the amount our community saved in 2017 from the services provided willingly by our ministry.



**\$545,840**

Sheltering and feeding the homeless and impoverished of Lebanon County.



**\$1,353,600**

Case management per need for guests.



**\$379,500**

Long-term savings of moving men, women and children off of public assistance programs toward self-sufficiency ... becoming productive citizens.



**\$12,350\***

GED program – increasing a person's self-esteem, as well as earning potential and increased tax revenue on the local, state and federal level (\*Additional tax revenue on just 10 graduates a year).



**\$336,950**

Lebanon Free Clinic providing healthcare to those who would otherwise have no other option but to be seen in the emergency room of the Good Samaritan Hospital (Includes direct medical services, volunteer hours and medications). Preventive intervention versus full-blown disease.



**\$780,000**

Lebanon Rescue Mission operates without being a burden on federal, state or local tax funding (Annual operating budget of all three ministries).



**Priceless**

Sheltering our nation's veterans.



**Priceless**

Requiring guests to live with accountability and responsibility versus taking social services and creating a drain on our county's health and wellbeing.



**Priceless**

Encouraging and enabling guests to reconcile with family, spouse, and/or children.



**Priceless**

Leading guests to a saving knowledge of Jesus Christ ... absolutely priceless!

**Total Annual Savings To Our County \$3,667,140**

# Agape Christmas a Huge Success!



*Handmade with love.*

Take a look at these pictures. In nearly every gift bag you'll find food, greetings, care items, and on top, a handmade lap throw. These Christmas packages brought tears to many seniors in our community, who can be forgotten at Christmas. Knowing someone cared so much to put these beautiful packages together for them, including a one-of-a-kind lap throw, caused many to break down in tears.

We are so proud of our volunteers and friends for their extraordinary generosity. Can you imagine the hours and the love and prayers poured out? Agape Christmas exceeded its goal of delivering 660 gift bags to seniors in our local area. Many struggle with feelings of loneliness, especially during the holiday season. By reaching out like this with such grace, our volunteers surrounded our neighbors with the love of Jesus Christ.

Thank you, each and every one, who volunteered and donated. **You made Agape Christmas a big success.** You blessed many who will remember your love for a long time.



*A portion of the 660 hand-delivered bags.*



*These happy junior representatives of the Pennsylvania Dairy Princess & Promotion Services, Inc., lit up our lives with their smiles and their donation of over 660 pounds of butter — one pound for each bag. You are true Princesses. Thank you!*



*Volunteers from Quest, Inc. helped assemble the gift bags ... "Many hands make light work".*

*An army of volunteers carefully and lovingly packed all the Agape Christmas gift bags and enjoyed doing it.*



# A Family of Friends working together

An army of loving people come from all over our community to donate their time, talent, and joyful presence with our ministry. You prepare meals, assist with mailings, teach classes, sort clothing donations, pick up food donations and help fundraising. Thank you!

Thank you for your passion to care for those who need others to care for them at this time. You shine the light of HIS love to Lebanon County. We are also so very grateful for the way you love and care for both our guests and our staff. We could not do what God has called us to do without you!

*Thank you*



---

God is not unjust; He will not forget your work and the love you have shown Him as you have helped His people and continue to help them.

~ Hebrews 6:10, NIV

---



# Your Spectacular Work

You are such a blessing to those seeking help at the Lebanon Rescue Mission. You provide nutritious food for the hungry, warm and safe housing for the homeless, life-saving medical care for the sick, and educational opportunities for the unemployed and underemployed. Most importantly, you present Jesus Christ as the Way, the Truth and the Life to those living in this world like sheep without a shepherd.

God has used your generosity, prayers and volunteer support to give hope and new beginnings to our guests. Thank you.

## Agape Family Shelter

*For Women and Children*

The Agape Family Shelter serves troubled single women and mothers with children. Our completed renovations allow women and children to be safe here as they move toward a new start. Through recovery programs, life-skills training classes and our GED program, women acquire new skills that make them more employable and able to support themselves and their family. We are so thankful for the 35 women now on their way to new or better employment.

Lilly is one mother you helped. After she came to the Agape Family Shelter, she began attending church and building job skills. She found a new job and even received a promotion! She is now in the graduate housing program with her 4 children and doing well. She is now a help to other women in need at her own church. Her life is forever transformed. Thank you.



**4,833**

Nights of lodging  
for women and  
their children



## Men's Shelter

*Building Integrity, Character and Hope*

Men come to the Mission from lonely, challenging situations. Life has fallen apart and become unbearable. The grip of homelessness and addiction won't let go.

Coming here they join a fellowship of men determined to support each other. Together they encourage one another on to faith and victory.

In our 12-month, residential program with a strong Biblical focus, men can take the time to get to the root of their issues and learn to depend on God. Your support provides food and shelter while lives change day by day.

Tony is one man who now trusts Jesus to guide him and keep him. He came to the Mission in 2016 anxious, depressed and separated from his family. He didn't have a job and felt collecting disability and food stamps was his only way to survive. When he heard the Gospel, he decided to become a follower of Jesus Christ. His faith was tested at his job and proved real. His obedience to Christ led him to grow spiritually and reconnect with his family, as well as find a better job.



**25,419**

Total meals  
served

**9,130**

Nights of  
lodging

## Lebanon Free Clinic

*Bringing Health & Wellness  
to the Community*

At the Lebanon Free Clinic, men, women and children receive access to primary medical care. Physical needs are met by offering wellness checks along with acute and chronic illness management.

Many do not have access to public insurance and cannot afford private insurance with high deductibles. But with your donation and the generous help of local practitioners, this care is provided free of charge.

Often, health care is given up when poverty and homelessness set in. Through your partnership, men, women and children in desperate need of medical attention receive care. Thank you!

---

Camila came to the United States after the recent hurricane in Puerto Rico destroyed everything she had. Her bag, with all her identification documents and medications, was stolen at the airport. She came to the Lebanon Free Clinic feeling hopeless and forgotten. But here, she was able to see a volunteer doctor within a week and receive her much needed medication. She now has hope where there was once despair.

---



### Services Provided

Our philosophy of care is total wellness. That means physical, mental and spiritual care. Our goal is to provide quality health care and share the love of God with others as we meet their basic health care needs:

- » Primary health consultations
- » Mental health care
- » Health screenings
- » Dental care clinics
- » Chronic health condition management and education
- » Prescribing and filling prescriptions for medications
- » Christian counseling and prayer



## The Learning Center

*Providing Education  
to Open New Doors*

Earning a living wage requires skills employers are looking for.

Through the Miller Coleman Academy (a.k.a. The Learning Center), guests have the opportunity to earn their GED's and learn new skills for better jobs.

Many students haven't been in school for decades and learning something new can be a challenge. But with the help of experienced staff and encouraging volunteers, many persevere to reach higher levels of education and achieve their goals.

**22**

Men enrolled  
in Nova

**17**

Graduates  
from Nova

# Great memories from 2017!



The Lebanon Rescue Mission is very thankful for the many volunteers who come throughout the year. Volunteers of any age are welcome to help in any way they can.



Students from the Lebanon school district were able to have their eyes tested and receive eyeglasses if needed — donors like you made it possible!



This painting was given to us by one of our patients at the Free Clinic.



Message of love left outside our Clinic.



Families in need of help can stay together at the Agape Family Shelter while pursuing independent living.